



Teaching Health and  
Social Care at Level 3?  
Choose BTEC Nationals



## Welcome to your Guide to BTEC Level 3 Nationals in: Health and Social Care

Your guide includes everything you need to know about BTEC Level 3 Nationals Health and Social Care qualifications, why universities and employers are so excited about BTEC qualifications, and why **around 1 in 4 students entering university in the UK do so with a BTEC.\***

\*Source: UCAS Progression Pathways – Jan 2016

*The skills to succeed – the confidence to progress*

## Contents

### Introducing BTEC Level 3 Nationals

Why choose BTEC Nationals? .....	4–5
The route to success .....	6–7

### Explore your BTEC Level 3 Nationals

Your qualifications explained .....	8–9
Health and Social Care .....	10–11

### Teaching BTEC Level 3 Nationals

Course materials .....	12–13
Published resources .....	14–15
myBTEC .....	16
Training .....	17
Delivering BTEC .....	18–19

### Assessing BTEC Level 3 Nationals

Assessment .....	20
Grading .....	21

### BTEC for Levels 1 and 2

BTEC Level 1 Introductory .....	22
BTEC Level 2 Technicals .....	23

## Why choose BTEC Nationals?

Young people taking their first steps towards a new career need the right blend of **technical and academic skills** in order to become the highly skilled, work-ready individuals employers and universities look for.

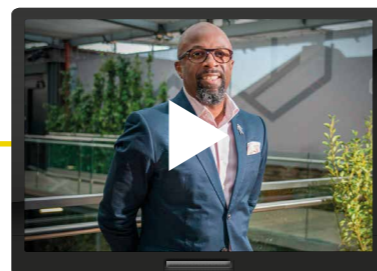
BTEC Level 3 Nationals are vocational qualifications designed to help your learners succeed. They have been developed in collaboration with over 5,000 universities, employers and professional bodies with **employability at the heart**, so your learners can develop the skills and confidence they will need to step into their future.

### Why universities choose BTEC



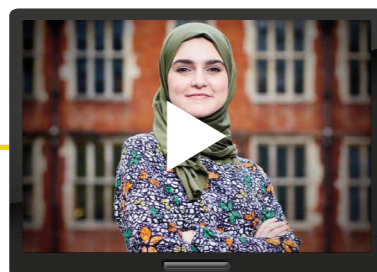
[quals.pearson.com/BTECprogress17Guide](https://quals.pearson.com/BTECprogress17Guide)

### Why employers choose BTEC



[quals.pearson.com/BTECprogress17Guide](https://quals.pearson.com/BTECprogress17Guide)

### Why students choose BTEC



[quals.pearson.com/BTECprogress17Guide](https://quals.pearson.com/BTECprogress17Guide)

## What's new

Your new BTEC Level 3 Nationals qualifications take a unit-by-unit approach and provide you learners with practical, work-related courses. They offer:

### Combination of assessment styles

Learners can demonstrate their knowledge, skills and understanding through work-related contexts. (see page 20 for details).

### Large foundation of mandatory units

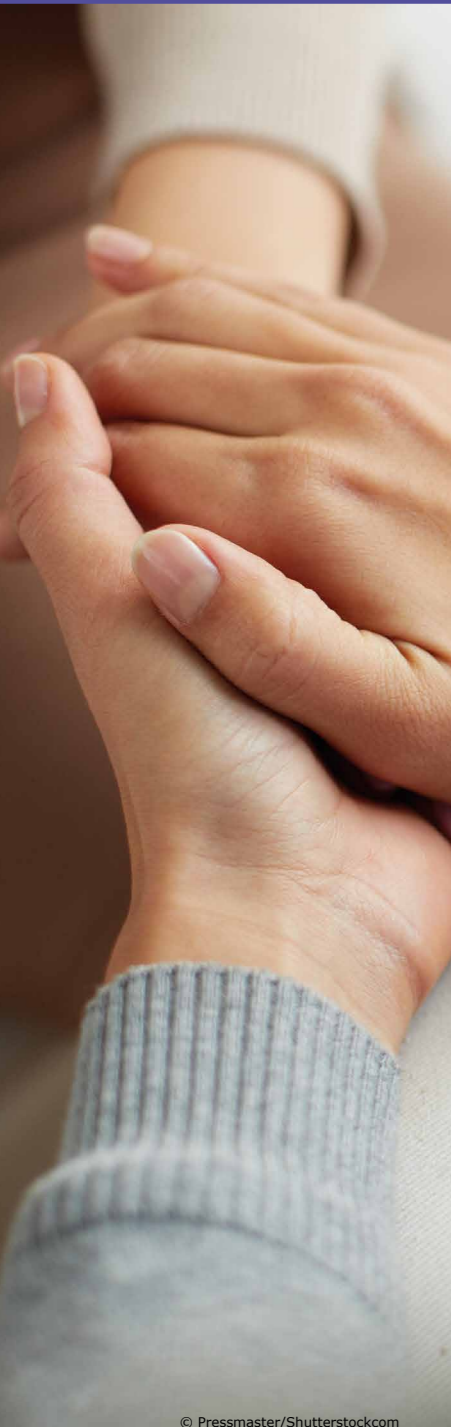
Universities and employers have evidence of a consistent level of core knowledge and skills.

### Comprehensive support

We've listened to feedback and put together our most comprehensive support package yet. (see pages 12–19 for details).

*The skills to succeed – the confidence to progress*





## The route to success

After 30 years of proven success, more and more employers and Higher Education institutions across the globe are choosing BTEC-qualified candidates for their **practical knowledge** and **employability skills**.

More than a million learners choose BTEC each year.

What can BTEC Level 3 Nationals in Health and Social Care do for your learners?

- ① **Work-related learning**, giving learners an edge and opening the door to higher education or employment in the healthcare or social care sectors.
- ② **Clear progression routes** into higher education or employment: such as a BSc. in Health and Social Care, BSc. in Nursing, or direct entry-level employment, training or apprenticeships.
- ③ **Transferable skills development** such as communication, research and analysis.

*The skills to succeed – the confidence to progress*

“BTEC courses give you real, hands-on experience. It’s what I call ‘learning by doing’ and gives you the skills today’s employers are looking for.”

*Peter Jones CBE,  
Entrepreneur*



Find out why **Peter Jones** and our other ambassadors choose BTEC at [quals.pearson.com/lchooseBTECguide](https://quals.pearson.com/lchooseBTECguide).

Meet our **BTEC Teacher/Tutor of the year 2017** Colette Burgess (left) who is a Course Director for Health and Social Care and Health Science at Suffolk College, and our **BTEC Child and Social Care Student of the Year 2017** Jay Bradley (right) at: [quals.pearson.com/BTECawards17guide](https://quals.pearson.com/BTECawards17guide)



## Did you know...

**4 out of 5** BTEC students go on to receive a **First or Second class degree**

(The outcomes associated with the BTEC route of degree level acquisition, London Economics 2013)

**37%** of businesses prefer recruits to hold a mix of academic and vocational qualifications or value them equally

(Inspiring Growth: Pearson/Skills CBI Skills survey 2015)

## Your BTEC Nationals Health and Social Care qualifications explained

BTEC Level 3 Nationals Health and Social Care courses offer a flexible range of qualifications that can be studied alongside other level 3 qualifications such as A levels or other BTEC Nationals as part of a larger programme of study, or as the main focus of study.

- They are designed for Post-16 Level 3 learners wishing to go on to further or higher level study of the sector or directly to employment.
- All sizes attract **UCAS points** and are widely recognised by universities and employers.



### Find out more

The following pages provide you with an overview of each course. For full details or to download your specifications please go to [quals.pearson.com/BTECNatsHSC16Guide](https://quals.pearson.com/BTECNatsHSC16Guide)

Your BTEC Level 3 Health and Social Care qualifications are available in a range of sizes and are **Applied General Style** qualifications.

### Applied General qualifications

For learners progressing to their career through higher level study, although they could go directly into employment at the end of the course. They will have the opportunity to:

- **choose between different qualification sizes** so they have the option to study full or part-time or take a BTEC alongside other level 3 qualifications such as A levels.

*The skills to succeed – the confidence to progress*



## Health and Social Care

Your BTEC Level 3 Nationals in Health and Social Care are Applied General-style qualifications and provide:

- **flexibility** for your students to progress to larger-size qualifications or specialise
- opportunity for students to showcase their skills through **practical assessments**
- the **underpinning knowledge and skills** needed to meet industry requirements



### Applied General

#### Certificate 180 GLH

Same size as 0.5 A level  
Applied General

**Total units: 2**  
2 Mandatory Units

**Purpose:** An introduction to the health and social care sector through applied learning. Part of a programme of study that includes other vocational or general qualifications. Supports progression to:

- Higher education

#### Extended Certificate 360 GLH

Same size as 1 A Level  
Applied General

**Total units: 4**  
3 Mandatory Units  
PLUS 1 Optional Unit\*

**Purpose:** A broad basis of study for the health and social care sector. When taken as part of a programme of study that includes other appropriate BTEC Nationals or A Levels, supports progression to:

- Higher education

#### Foundation Diploma 510 GLH

Same size as 1.5 A levels  
Applied General

**Total units: 6**  
4 Mandatory Units  
PLUS 2 Optional Units\*

**Purpose:** This is a one-year, full-time course. A coherent study of the health and social care sector supporting progression to:

- Higher education
- An apprenticeship
- A further year of study at Level 3

#### Diploma 720 GLH

Same size as 2 A Levels  
Applied General

**Total units: 8**  
6 Mandatory Units  
PLUS 2 Optional Unit\*

**Purpose:** This qualification accounts for two-thirds of a two-year, full-time study programme for learners intending to go onto further study in the sector. Supports access to:

- Higher education courses
- An apprenticeship

#### Extended Diploma 1080 GLH

Same size as 3 A levels  
Applied General

**Total units: 13**  
8 Mandatory Units  
PLUS 5 Optional Units\*

**Purpose:** This qualification has been designed to be the only qualification in a two-year, full-time study programme. It is an in-depth study of the health and social care sector, and supports progression to:

- Higher education
- An apprenticeship

#### Extended Diploma 1080 GLH (Health Studies pathway)

Same size as 3 A levels  
Applied General

**Total units: 13**  
8 Mandatory Units  
PLUS 5 Optional Units\*

**Purpose:** This qualification has been designed to be the only qualification in a two-year, full-time study programme. This is an Extended Diploma pathway specifically for those learners who wish to progress to a health related degree.

Included in performance measures in England – see website for full details

\*please see specification for details of all Optional Units available.

Information correct at time of publication – please see specification for latest information.

**The skills to succeed – the confidence to progress**

#### Find out more

For **Teaching support** see page 12 • For **Assessment** see page 20

Download your **specification** at: [quals.pearson.com/BTECNatsHSC16Guide](https://quals.pearson.com/BTECNatsHSC16Guide)



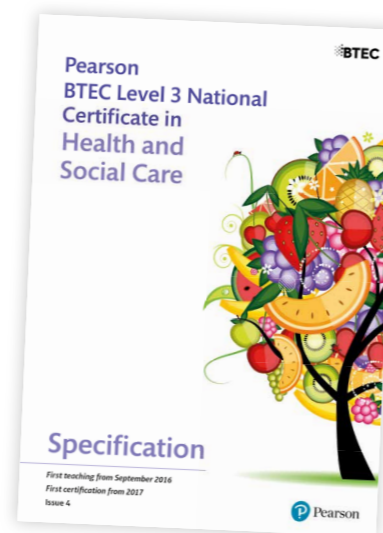
## Course materials

BTEC Level 3 Nationals in Health and Social Care have a comprehensive range of FREE course materials available to help with **planning and teaching**, as well as **assessing and tracking** progress of your learners.

### Find out more

For full details of all the support available please see website:

[quals.pearson.com/BTECNatsHSC16Guide](https://quals.pearson.com/BTECNatsHSC16Guide)



*The skills to succeed – the confidence to progress*

### Plan

We've a bank of support materials designed to help you choose and plan the right course for your learners including:

- ⦿ Specifications
- ⦿ Sample Assessment Materials
- ⦿ Delivery plans
- ⦿ myBTEC planning tools
- ⦿ Authorised Assignment Briefs
- ⦿ Getting Ready to Teach free events

### Teach

You'll also find a wide range of teaching and learning materials to help you deliver your course such as:

- ⦿ Delivery guides
- ⦿ Schemes of work
- ⦿ Training events
- ⦿ Published resources

### Assess and Track

There's also a selection of resources designed to help you prepare for assessment and track learner progress:

- ⦿ Sample Assessment Materials
- ⦿ Sample Marked Learner Work
- ⦿ Authorised Assignment Briefs
- ⦿ Quality Assurance guides
- ⦿ myBTEC progress tracking

### Find out more

- See page 17 for full details about free training events
- Download your specifications at: [quals.pearson.com/BTECNatsHSC16Guide](https://quals.pearson.com/BTECNatsHSC16Guide)

## Published resources (paid for)

We know it can be time-consuming and tricky to create lessons that work for each of your students, stretching the more able and supporting lower ability. That's why our resources are built around established pedagogical principles, to give your students targeted support and help them improve their understanding and progress.

This pedagogy runs through the:

**Student Book:** features throughout help learners to build knowledge, understand how to excel in assessment, reflect and evaluate learning, and link their learning to real-life workplace scenarios

**Teaching Pack:** additional planning and delivery guidance, with supporting resources for use in class or for homework.

## Student books 1 and 2 with ActiveBook

- Help learners develop and apply principles and practical knowledge
- Support for external assessment, including guidance for preparation and sample answers
- Support to encourage self-evaluation
- Accompanied by an ActiveBook (online versions of the Student Books)



You do not need to purchase resources in order to deliver these qualifications.

## Resources built around learning principles you can trust

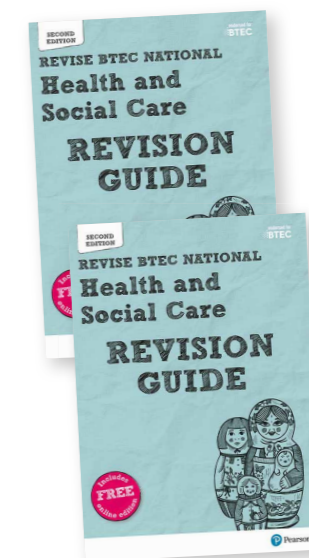
## Teaching packs (via ActiveLearn Digital Service)

ActiveLearn  
Digital Service

- Include online versions of each student book
- Provide continuous support through planning and delivery
- All packs include a range of editable activity sheets, presentations and tools to structure lessons
- 'e learning' packs contain interactive activities ideal for homework or independent learning
- Delivered through our **ActiveLearn Digital Service** at [www.pearsonfe.co.uk/ALDS](http://www.pearsonfe.co.uk/ALDS)

## Revision guides and workbooks

- Help learners prepare for external assessment
- Revision Guide for classroom or independent study
- Revision Workbook to help learners to test their own knowledge and skills



### Find out more

Download sample units and order evaluation copies at [www.pearsonfe.co.uk/BTECNats16and17Guide](http://www.pearsonfe.co.uk/BTECNats16and17Guide)







## MyBTEC

We know that as a teacher workload can be an issue, that's why to help you save time we have designed myBTEC, a unique free service that aims to reduce your admin workload.

### What myBTEC can do for you:

- ⦿ **Saves you time** – for example when Internally Verifying an assignment brief, at least 50% of the questions are answered for you
- ⦿ **Reduces your workload** – for example your assessment plan is produced automatically from your assignment briefs in myBTEC
- ⦿ **Automatic grade tracking calculations**, so you know your students are on track
- ⦿ **Easily export and download all documents**, information and results
- ⦿ **Give you the complete visibility of all courses**, assessment, internal verification and results at your centre, so you can check progress at anytime.

Simply login at [mybtec.pearson.com](http://mybtec.pearson.com) with your Edexcel online details.

**Find out more**  
Discover myBTEC at  
[quals.pearson.com/myBTECNatsGuide17](http://quals.pearson.com/myBTECNatsGuide17)

*The skills to succeed – the confidence to progress*

## Training

We offer a range of events to help you in every aspect of planning, teaching and assessing your BTEC courses.

To make it as easy as possible for you to benefit from our training, many of our **face-to-face** events are available as **online sessions**, and you can request any of our events to be delivered as paid-for events in your centre.

Our programme of events:

- ⦿ make it easy for you to access BTEC training **how, when and where** you need it.
- ⦿ offer **qualification-based** and **role-based** courses so you can choose which event is right for you.
- ⦿ are **delivered by experts** passionate about training.
- ⦿ provide opportunities to **share ideas and best practice**.

What's more, our flexible range of high quality training events not only support your delivery of BTEC courses, but also help towards your **continued professional development**.

**Find out more**  
Book onto one of our events at [quals.pearson.com/BTECNatsTraining](http://quals.pearson.com/BTECNatsTraining)





## Admin support

### New to BTEC?

If you're thinking about teaching BTEC Nationals and want to know more about what's involved and the support we can provide see our step-by-step guides at [quals.pearson.com/stepbystepBTEC](https://quals.pearson.com/stepbystepBTEC).

We've included guidance on:

- How to get started
- Building your BTEC team
- Quality assurance
- Internals assessment
- External assessment

### Already teaching BTEC?

Remember you can find detailed information about key BTEC processes, forms and guidance materials [quals.pearson.com/BTECsupport](https://quals.pearson.com/BTECsupport).

You'll also find all of the essential tools and forms on each of our dedicated qualifications pages, alongside your specifications and any additional resources specific to your BTEC.

*The skills to succeed – the confidence to progress*

## Specialist help and advice

You also have access to specialist support and advice.

We will be happy to help with any questions you may have about your BTEC Level 3 Health and Social Care qualifications.

### Ask the expert

✉ [TeachingHealthandSocialCare@pearson.com](mailto:TeachingHealthandSocialCare@pearson.com)

☎ UK: 020 7010 2163

☎ Intl: +44 (0)20 7010 2163



### Find out More

For full details visit [quals.pearson.com/BTECNatsHSC16Guide](https://quals.pearson.com/BTECNatsHSC16Guide)

## Assessment and Grading

### Types of assessment

Your BTEC Level 3 Nationals Health and Social Care qualifications take a unit-by-unit approach and offer a combination of assessment styles.

This gives your learners the opportunity to showcase their skills and apply their knowledge in an appropriate, work-related context, and provides evidence of what they can do when they apply to enter higher education or employment.

Assignments (internally assessed)	Tasks (externally assessed)	Written Exams (externally assessed)
<p>Set and marked by: Centre Verified by: Pearson</p> <p><b>Assignments</b> are practical tasks set in work-related scenarios that can be tailored to local industry needs for your learners. Learners demonstrate how they apply knowledge and skills to complete a practical project over a period of time, working individually or in groups.</p>	<p>Set and marked by: Pearson</p> <p><b>Tasks</b> are practical work-related scenarios completed in realistic, time-based situations. They are completed in controlled conditions and some tasks have pre-released information. Learners demonstrate how to apply learning to common workplace or HE scenarios. Tasks provide evidence of a consistent standard of assessment for all BTEC learners.</p>	<p>Set and marked by: Pearson</p> <p>For written exams, learners draw on essential information to create written answers to practical questions in exam conditions. Learners demonstrate they can apply appropriate knowledge to a work-related challenge in timed conditions.</p>

*The skills to succeed – the confidence to progress*

### Grading

A learner's final qualification grade reflects their achievements across units in their BTEC Nationals course.

Both internally and externally assessed units are individually graded, and each final unit grade is allocated points.

- Internally assessed units are marked and graded in the Centre (school, college or training provider) and subject to external verification by Pearson.
- Externally assessed units are marked and graded by Pearson.
- Units are graded Pass, Merit or Distinction, with external units also having a N grade in most Level 3 sectors. Total points scored across all units are used to calculate the final qualification grade.

Achievement of a Certificate with a D grade:

	GLH	Type (Int/Ext)	Grade	Unit points
Unit 1	90	Int	Distinction	24
Unit 2	90	Ext	Merit	22
<b>Totals</b>	<b>180</b>		<b>D</b>	<b>46</b>

#### Find out more

For full details see Section 9 of your specification

Download your specification at [quals.pearson.com/BTECNatsHSC16Guide](https://quals.pearson.com/BTECNatsHSC16Guide)



© 123rf/Jean-Paul CHASSENET

We've also developed a range of new BTEC qualifications for Level 1 and Level 2 learners.



## For Level 1 post-16 Learners

### BTEC Level 1 Introductory qualifications

Graded, unit-based qualifications designed to develop transferable and sector skills so your **post-16 learners** can progress to further study, apprenticeships or training. BTEC Level 1 introductory qualifications include:

**Health and Social Care**

**Vocational Studies**

#### Find out more

Download your specifications at:

[quals.pearson.com/BTECL1IntroGuide](https://quals.pearson.com/BTECL1IntroGuide)



## For Level 2 post-16 learners

### BTEC Level 2 Technicals

Designed to give **post-16 learners** real hands-on practical experience to master the skills they will need to succeed in their career or higher level study.

**Adult Care**

#### Find out more

Download your specifications and view all our BTEC Level 2 Technicals at:

[quals.pearson.com/BTECL2TechnicalGuide](https://quals.pearson.com/BTECL2TechnicalGuide)

*The skills to succeed – the confidence to progress*

## Your next Steps

1. Download your specifications, sample assessment materials and other FREE resources at:  
[quals.pearson.com/BTECNatsHSC16Guide](https://quals.pearson.com/BTECNatsHSC16Guide)
2. Order your paid-for resources at:  
[www.pearsonfe.co.uk/BTECNats16and17Guide](http://www.pearsonfe.co.uk/BTECNats16and17Guide)

## Stay in touch

Sign up for updates at  
[quals.pearson.com/BTECNats16UpdateGuide](https://quals.pearson.com/BTECNats16UpdateGuide)  
and we'll keep you up-to-date with the latest news.



Follow us on Twitter

@teachBTEC

#ichooseBTEC

## Help and advice

For help and advice about teaching your new qualifications contact our Subject Advisor for Health and Social Care:



TeachingHealthandSocialCare@pearson.com



UK: 020 7010 2163



Intl: +44 (0)20 7010 2163