

Language is more than words

Built on a foundation of inclusivity, accessibility and transparency, we have created a qualification that takes a student-centred approach.

Combining clear, concise and straightforward assessments with engaging, meaningful and relatable content, our new Pearson Edexcel GCSE Modern Languages qualification is fit for the future, equipping students for life and careers in a global setting.



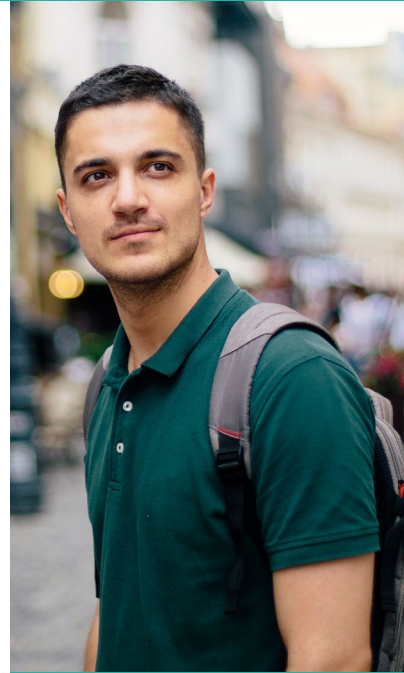
4

things to know about our new **2024 MFL GCSEs**

1. Inclusive and relatable content

Content which reflects and represents diverse student experiences, so all students feel included, and can speak and write about the things that interest them most.

- Familiar content building on existing KS3 knowledge including friends, food and drink, school, shopping, and travel.
- Engaging contemporary content including equality, physical and mental well-being, the natural world, social media and gaming.
- Speaking and writing assessments set within familiar experiences, or pre-known settings, with no reliance on knowledge of foreign travel.
- Reading and listening assessments in familiar and unfamiliar settings, for cultural engagement, supported by contextualising images and glossing to ensure shared understanding.
- Guidance on gender-neutral language, and equal credit of non-binary pronouns and/or masculine, feminine or non-binary agreements.



2. Student-centred approach

Trialled on over 800 students of all abilities, across a wide range of schools, to ensure the optimum student experience.

- The new elements of the dictation and read aloud trialled extensively to reach the best format for student success.
- List of 10 role play settings and finite list of functions to build student confidence e.g. make transactions, give reasons, etc.
- 3 repeats in the listening, with sufficient time to read questions and write answers.
- 'Chunked' listening and reading texts to avoid memory being more important than language knowledge.
- Pre-selected thematic context for the picture with conversation task, to provide reassurance.
- No 'tricksy' question types: differentiation based on student ability.



3. Clear, concise and straightforward assessments

Consistent assessment structure so students can confidently attempt the whole assessment, with no surprises.

- One paper per skill, 50 marks per paper and the same at each tier: clear and unambiguous.
- Consistent assessment structure: same question types in the same place for the same number of marks every time.
- Thematic contexts to provide meaningful, reassuring content.
- Optionality: choice of pictures for speaking assessment; optional writing questions at both tiers.
- Supportive assessments with English rubrics and questions, helpful scaffolding in writing assessments and prompts to encourage speaking responses.
- Fully exemplified mark schemes, using real student responses.



4. Stress-free transition to the new qualification

Practical support to get started with your new qualification and solutions to ease the admin and delivery burden.

- A dedicated switching consultant and experienced Language subject advisor.
- Delivery support will include an interactive vocabulary tool to tailor the vocabulary list to suit your students' interests, a sequencing tool to organise your speaking assessments, and read aloud and dictation resource banks.
- Planning support will include getting started guidance and walk-through videos, editable course planners and schemes of work, and a digital specification experience.